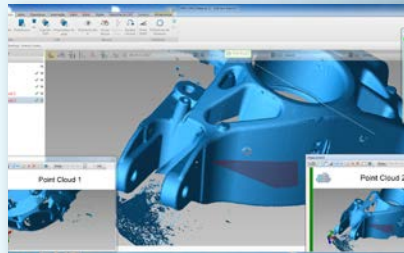
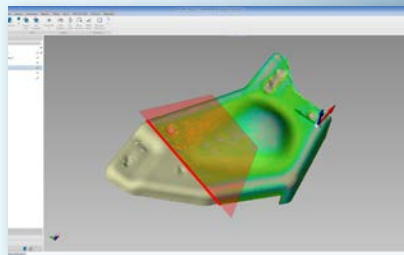
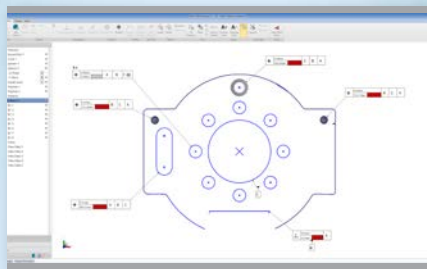


FARO® CAM2® Measure 10

Your Complete 3D Measurement Software



SIMULTANEOUS MEASUREMENT CAPABILITIES

Connect multiple 3D measurement devices within the same coordinate system and simultaneously scan into a single seat of software on one computer. This capability allows users to quickly scan large objects and complete 3D scanning jobs faster than ever before.

GD&T

Simplified analysis and visual reporting allows the results from a part inspection to be displayed just like a print to easily visualize and determine part quality. This completely eliminates the need to look at each feature sequentially to make the same determination.

AUTOMATED REPEAT INSPECTIONS

Easily automate repeat inspections by programming data analysis to automatically occur after the measurements are taken. The ability to automate these reoccurring inspection tasks can reduce required training time, eliminate the risk of operator error, and allow jobs to be completed quickly and confidently.

EXPANDED POINT CLOUD CAPACITY

Collect over 20 times more data than in previous versions while maintaining fast processing speed.

3D SCAN TRIM EDGES

Trim edges on materials such as sheet metal to be easily scanned, preventing the need to collect hard probed measurements on part edges.

FARO CAM2 Measure 10 is a metrology software suite designed for users who are seeking powerful solutions that enable fast and efficient 3D measurement with unbeatable simplicity. It's available in two different versions:

CAM2 Measure 10 – Full: A comprehensive version ideally-suited for all contact and non-contact 3D measurement applications when point cloud data may be required. **CAM2 Measure 10 – Probing:** A limited version ideally-suited for all contact measurement applications when point cloud data is not required.

Common Applications: General Part Inspection ▪ CAD-to-Part Comparison ▪ Inspection of Dies and Moulds ▪ Panel Inspection ▪ Inspection of Cast / Forged Parts ▪ Component Alignment & Assembly ▪ 1st Article Inspection ▪ Verification of Tools, Jigs and Fixtures ▪ Inspection of Interior Components

Industries: Metal Fabrication ▪ Energy ▪ Machine Shop ▪ Foundry ▪ Mechanical Engineering Automotive ▪ Aerospace ▪ Machine Tools ▪ Measurement Service

BENEFITS

- ▶ **Interactivity:** Live feedback displaying results in a graphical 3D view and immediate recalculation of results
- ▶ **Consistency:** Image-based support for measurement guidance; Live error display during measurements
- ▶ **Flexibility:** Immediate measurement; One click repeat part measurements
- ▶ **Reliability:** NIST / PTB certification
- ▶ **Ease of use**

VERSION COMPARISON

Capability Comparison	Probing	Full
Werken met contactmeetapparaten	X	X
Werken met contactloze meetapparaten		X
Verplaatsen van apparatuur	X	X
CAD import	X	X
Constructies en afmetingen	X	X
Coördinatensystemen	X	X
Alignments	X	X
GD&T	X	X
Puntenwolkaanpassing		X
Puntenwolkanalyses		X
Rapportgeneratie	X	X
Hardware Compatibility Comparison		
FaroArm	X	X
FARO Laser Line Probe		X
FARO Laser Tracker	X	X

KEY FEATURES

Live Colour Scan

Users can quickly scan free-form parts and check their quality in real time. The software provides immediate feedback with different colours deviations from the CAD model during the scanning process, supporting an easy and prompt identification of inconsistencies. No additional post scan analysis is required.

Point Cloud Registration

Users can merge two or more spatially disjointed point clouds from a common part. This is very useful when the user has to move an already scanned part to a new position for scanning from a different side, or move the scanning device to a new location and scan from there without the need to reference the new device's position.

Cross Section Analysis

This feature allows for the 2D analysis of scan data over a well-defined area of the CAD. Users can extract dimensions (radius, angle, height) for analysis, add markers to define locations where labels will show deviations and set the best view for reporting.

Remote Measurement

With the CAM2 Measure 10 Remote Apple App, iPhone, iPod Touch and iPad owners can communicate with their CAM2 Measure 10 via WLAN and thus conduct remote measurement: run commands, change scanning modes, take positions and see results in real-time. It also supports multiple operators and QuickTools.

Deviation Markers

Users can pre-set the areas where detailed analysis will be needed. The software simplifies the measurement process by guiding operators to those areas where data must be collected.

ADDITIONAL CAPABILITIES

Import/Export

- Import/export points to a text file
- Import CAD files
- Export measurement results to CAD
- Export Point Cloud to mesh
- Export CAD as XGL

Measurement

- Seamless connection to FARO hardware devices
- Direct measurement mode
- Automatic projection plane mode
- QuickTools programming module
- Tube measurement
- Easily align to part
- Live feedback during measurement
- Guided geometry measurement
- Repeated part measurement

Programming

- Record steps for a part program (online/offline)
- Play steps in a measurement program
- Integrated programming module

Alignments

- Align my Part Wizard
- Iterative
- 3.2.1
- Six-point surface
- RPS
- Constrained Iterative

Nominals

- Pick features from CAD (single click)
- Create nominal features by entering values

Reporting

- Versatile export formats
- Report with images and in different CS
- Export to HTML, text, Microsoft[®] Excel, PDF

Live Colour Scan

- Colour scale in the 3D view
- Surface Profile GD&T
- Place labels on your scan to determine deviations at critical locations
- Export scans to text file

SPECIFICATIONS

Hardware Requirements	Minimum Requirements*	Recommended Requirements**	High performance Requirements***
Processor	Intel Core i5-4200M, Dual Core 2.5GHz	Intel Core i7-4600M, Dual Core 2.9GHz	Intel Core i7-4900MQ, Quad Core 2.80 GHz
RAM	8GB, DDR3	16GB, DDR3	32GB, DDR3
Hard Drive	500GB	256GB SSD	512GB SSD + 1TB SATA 6
Graphics	NVIDIA Quadro FX K1100M	NVIDIA Quadro K3100M	NVIDIA Quadro K5100M
USB Port	1 (if using portlock licensing)	1 (if using portlock licensing)	1 (if using portlock licensing)
DVD-Rom	Yes	Yes	Yes

* For Point Probe Measurements, ** For Point Probe Measurements with Large CAD; Moderate Point Cloud Scanning, *** Heavy Point Cloud Scanning

Platform: Windows[®] 7 • Windows[®] Vista

Data Input: Parasolid[®], IGES, VDA/FS, STEP • Optional - Unigraphics[®], Solidworks[®], CATIA[®], Solid Edge[®], ProE[®] & Inventor[®]

Data Output: Parasolid[®], IGES, VDA/FS, STEP

Languages: Chinese • English • French • German • Italian • Japanese • Portuguese • Polish • Russian • Spanish • Turkish



Global Offices: Australia • Brazil • China • France • Germany
India • Italy • Japan • Malaysia • Mexico • Netherlands
Philippines • Poland • Portugal • Singapore • Spain • Switzerland
Thailand • Turkey • United Kingdom • USA • Vietnam

www.faro.com
Freecall 00 800 3276 7253
info@faroEurope.com

